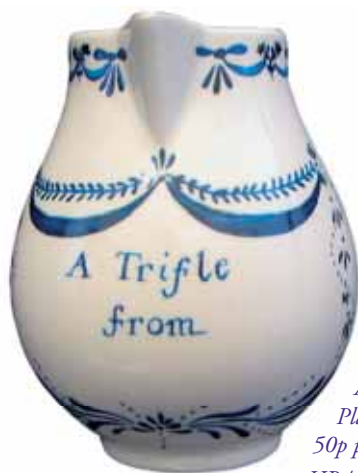


# Trifle range

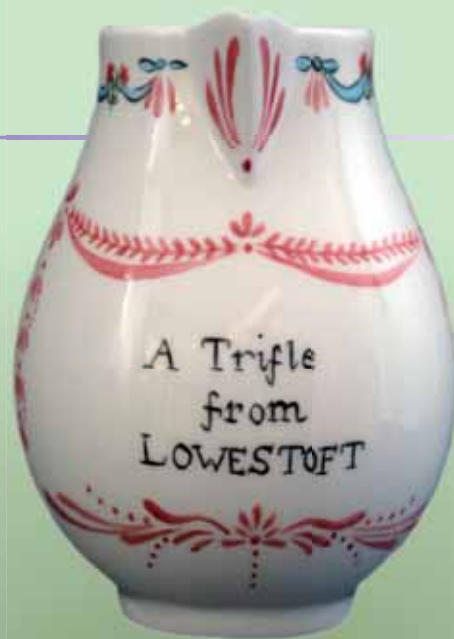
The 18th Century factory at Lowestoft was thought to be the first producer of holiday souvenirs, with their "Trifle from.." range of pieces. Most of these have been attributed to the painter, and foreman of the factory, Robert Allen, since the calligraphic style of these and other work known to have been painted by him are the same. The Trifle pieces appear from the 1790's and are in the main polychrome. Not only do they bear the name of Lowestoft, but those of surrounding villages, such as Bungay, Holt and Wangford. These pieces are now scarce.



*A Trifle from. Lithograph £27.50  
Place name to be hand painted  
50p per letter for lettering  
HP / SBC / BUT*

Redgrave House,  
Battery Green Road,  
Lowestoft,  
Suffolk NR32 1DE  
Tel: (01502) 572940  
Fax: (01502) 583827  
E-mail: [sally.rivett@lowestoftporcelain.co.uk](mailto:sally.rivett@lowestoftporcelain.co.uk)  
[www.lowestoftporcelain.com](http://www.lowestoftporcelain.com)

Lowestoft Porcelain



*Hand-painted Sparrow Beak Creamer - £58.95 HP / SBC / BUT*



*Hand-painted Heritage Mug - £85.00 HP / HM / BUT*



*Hand-painted miniature Tea Pot - £59.95 HP / TP1 / BU*